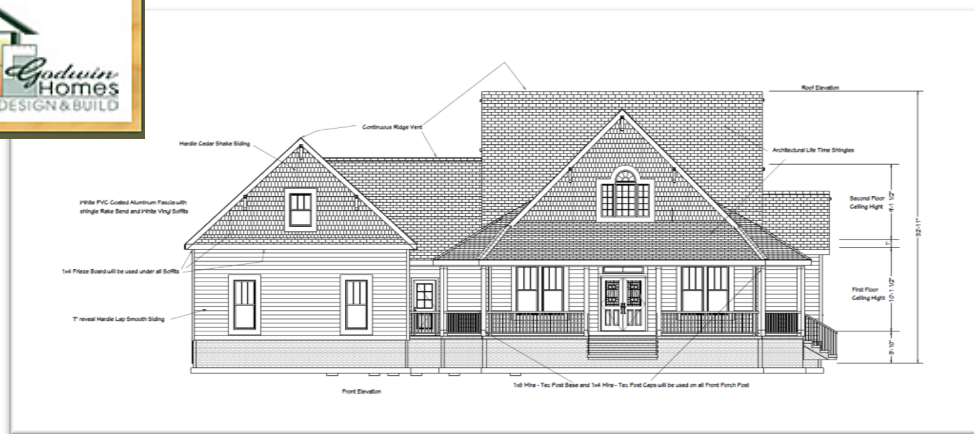




The Wisteria by Godwin Homes  
 3703 Friendly Orange Court \* Lot 103  
 2,457 Sq. Ft. \* 3 Bedrooms \* 3.5 Bathrooms \* Bonus  
**\$449,900**



## Notable Features:

- ✓ 8' Wrap-Around Front Porch
- ✓ 10' Ceilings on First Floor
- ✓ Luxury Interior Trim Package
- ✓ Large Kitchen + Stainless Gas Appliances
- ✓ Gas Fireplace + Shaker-Style Built-In Cabinets
- ✓ Ample 2<sup>nd</sup> Floor Storage Over Expanded Garage
- ✓ Large Screened Porch + Deck for Entertaining
- ✓ Relaxing Garden Tub in Master Bath



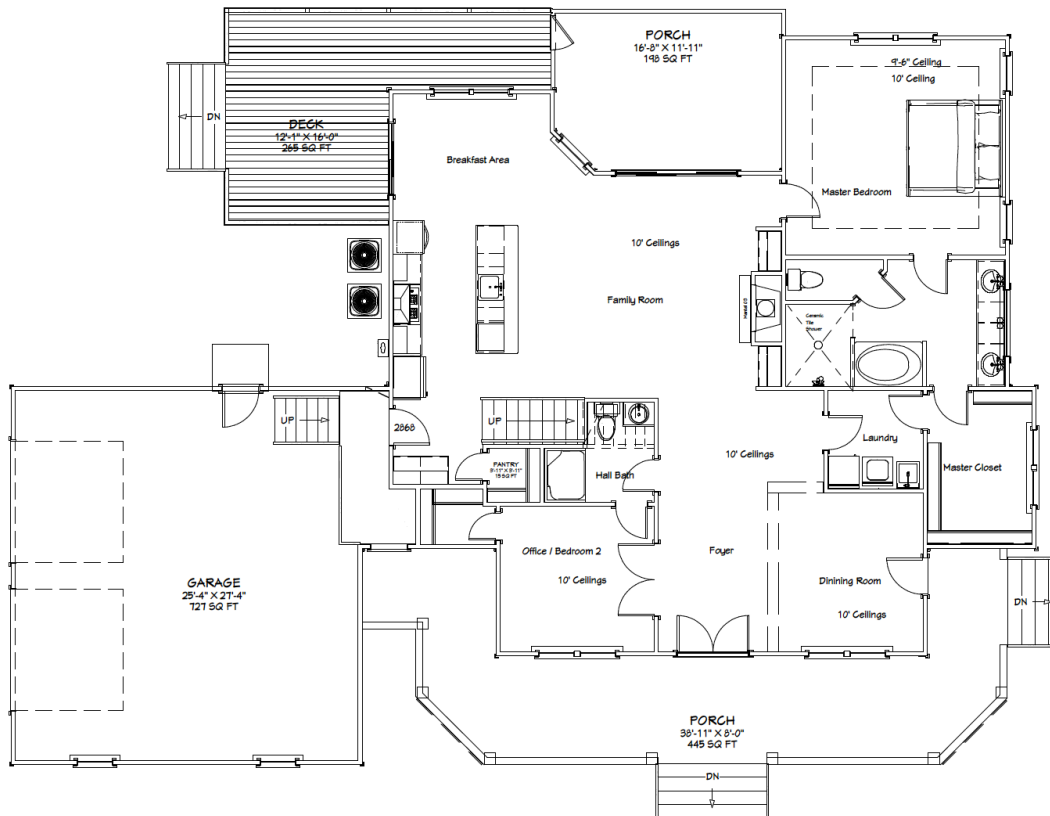
Build The Wisteria on Your Own Homesite in The Bluffs: Base Price From \$405,000.

For more information, including pricing, please contact:  
 The Bluffs Real Estate Company \* 910.383.2820

\*price is based on individual homesite and neighborhood requirements and is subject to change without notice. Effective 10.9.18

9700 Strawberry Hill Drive Leland, NC 28451 | 910.383.2820 | [TheBluffsNC.com](http://TheBluffsNC.com)

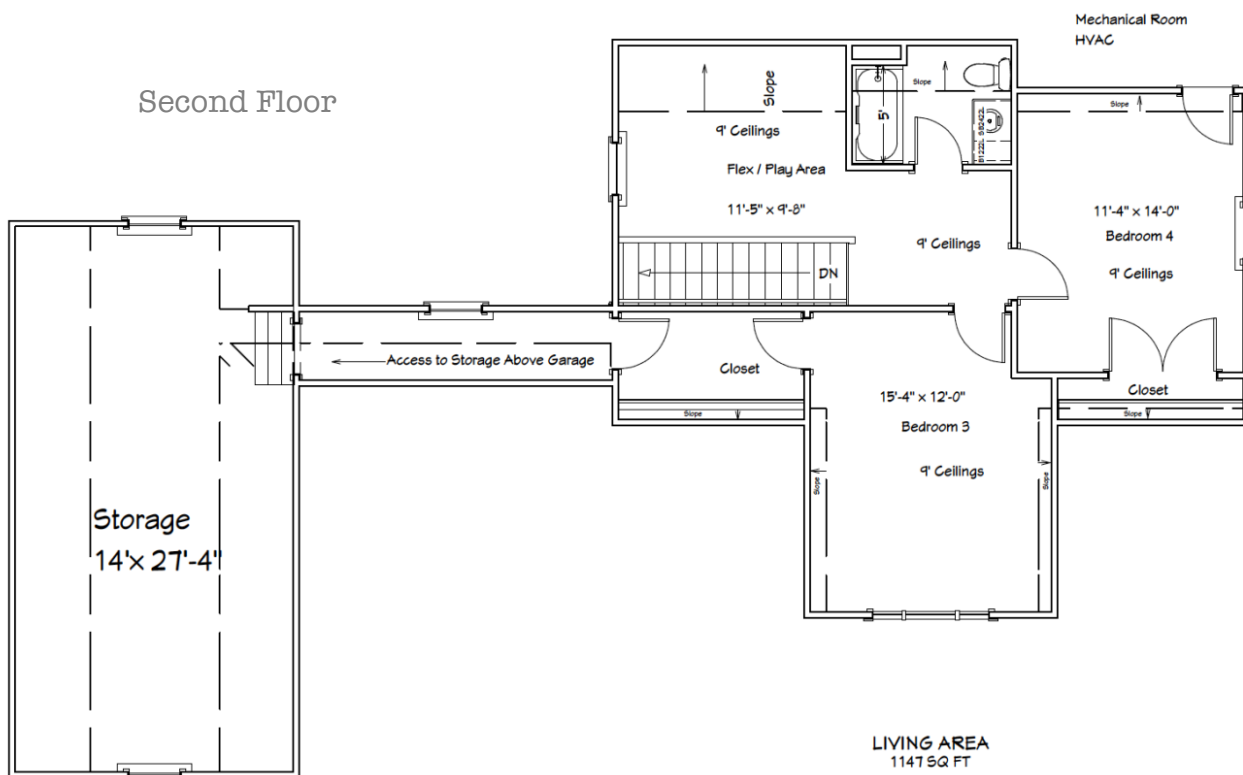
## First Floor



First Floor Living Area 1022 S.F.  
Total Living Area 2451 S.F.

## Attic

## Second Floor



LIVING AREA  
1147 SQ FT